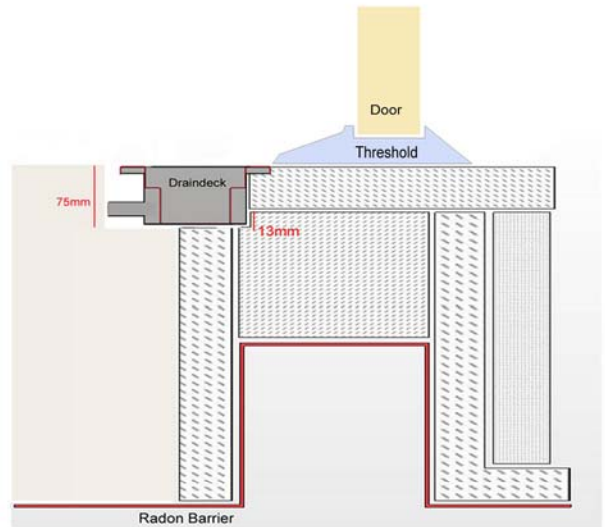
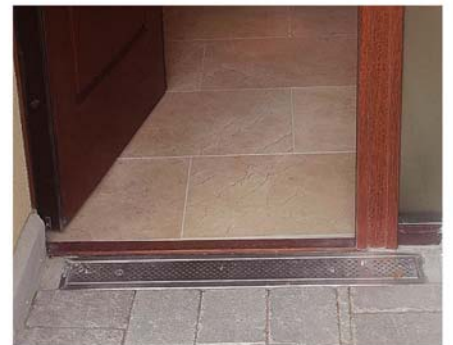


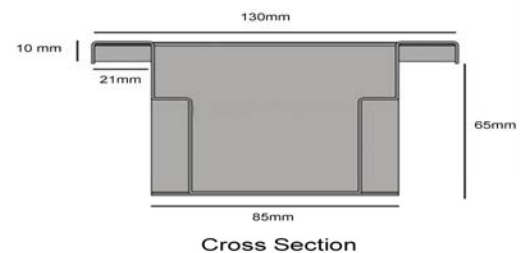
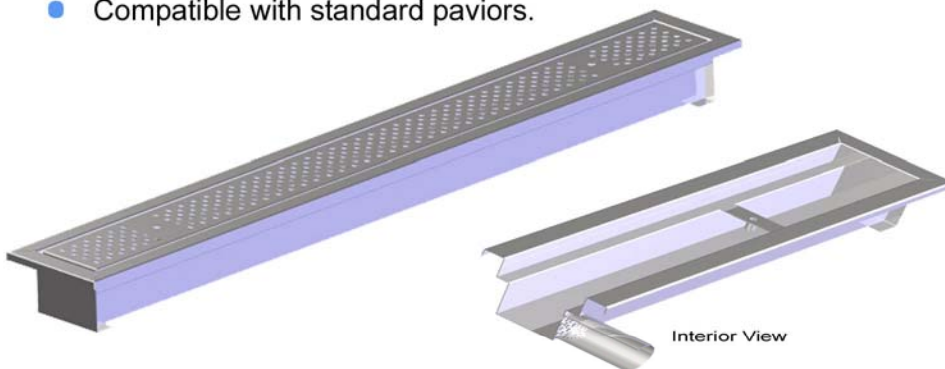
Stapleton Engineering would like to introduce draindeck SS130 Part-M compliant threshold drainage channel. An attractive drainage. Channel for use around building entrances fitted with level access.



- Simple to install, can be fitted by one person as it is lightweight.
- Shallow design ensures that drainage channel will not interfere with radon barrier.
- Can be made up to your specific dimensions if required.
- Heelsafe.
- Available ex-stock.
- Standard (1 1/2" BSP) fitting outlet .
- Manufactured from satin polished stainless steel.
- Strong and resistant to on-site breakages and the passage of time.
- Compatible with standard paviors.



Typical SS130 in use



Lengths Available mm	Width	Height
800	127	74
900		
Site Specific		